

## Tech Data

# Viega ProPress® 3-Way Valve Model 2976.3



### Description

Viega ProPress 3-Way Valve is a 3-port valve which can be used as a diverting or a mixing valve. When used as a diverting valve, the valve has one inlet (AB) and two outlets (A and B). When used as a mixing valve, the valve has two inlets (A and B) and one outlet

(AB). The valve helps regulate system fluid temperatures by mixing fluids from two sources. It is ideal for controlling temperatures in heating, cooling, and radiant application. The valve can be controlled both manually or through the use of an actuator (Model #2877.10).

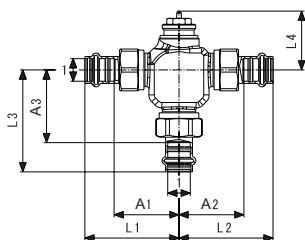
### Features

- Female BSP threads
- Delivered with 3 ProPress tailpieces with EPDM sealing elements
- EPDM flat gasket

### Ratings

- Temperature range: 0°F - 250°F
- Max. Operating Pressure: 250 psi

### Viega ProPress 3-Way Valve - Model 2976.3



| Part No. | Size (in) | A1 (in) | A2 (in) | A3 (in) | L1 (in) | L2 (in) | L3 (in) | L4 (in) | Cv (US gal/min) |
|----------|-----------|---------|---------|---------|---------|---------|---------|---------|-----------------|
|          | 1         |         |         |         |         |         |         |         |                 |
| 87420    | 1/2       | 1.85    | 1.85    | 2.56    | 2.68    | 2.68    | 2.87    | 1.65    | 2.89            |
| 87425    | 3/4       | 2.28    | 2.28    | 2.72    | 3.19    | 3.19    | 3.47    | 2.09    | 5.09            |
| 87430    | 1         | 2.52    | 2.52    | 2.87    | 3.43    | 3.43    | 3.62    | 2.09    | 6.59            |
| 87435    | 1 1/4     | 2.68    | 2.68    | 2.99    | 3.70    | 3.70    | 3.86    | 2.09    | 8.32            |
| 87440    | 1 1/2     | 3.07    | 3.07    | 3.07    | 4.49    | 4.49    | 4.65    | 2.13    | 9.83            |
| 87445    | 2         | 3.07    | 3.07    | 3.31    | 4.65    | 4.65    | 4.72    | 2.32    | 11.56           |



This document is subject to updates. For the most current Viega technical literature, please visit [www.viega.us](http://www.viega.us).



Viega products are designed to be installed by licensed and trained plumbing and mechanical professionals who are familiar with Viega products and their installation. **Installation by non-professionals may void Viega LLC's warranty.**

| Component | Material        |
|-----------|-----------------|
| Body      | Bronze          |
| Stem      | Stainless Steel |
| Insert    | Brass           |
| Seal      | EPDM            |
| Cap       | Plastic         |

**V Viega LLC**  
585 Interlocken Blvd.  
Broomfield, CO 80021

Phone (800) 976-9819  
[www.viega.us](http://www.viega.us)

TD-PP 0424 ProPress 3-Way Valve

