

## Product Instructions

# Viega ProPress® Pressure Independent Balancing and Control Valve (PIBCV)

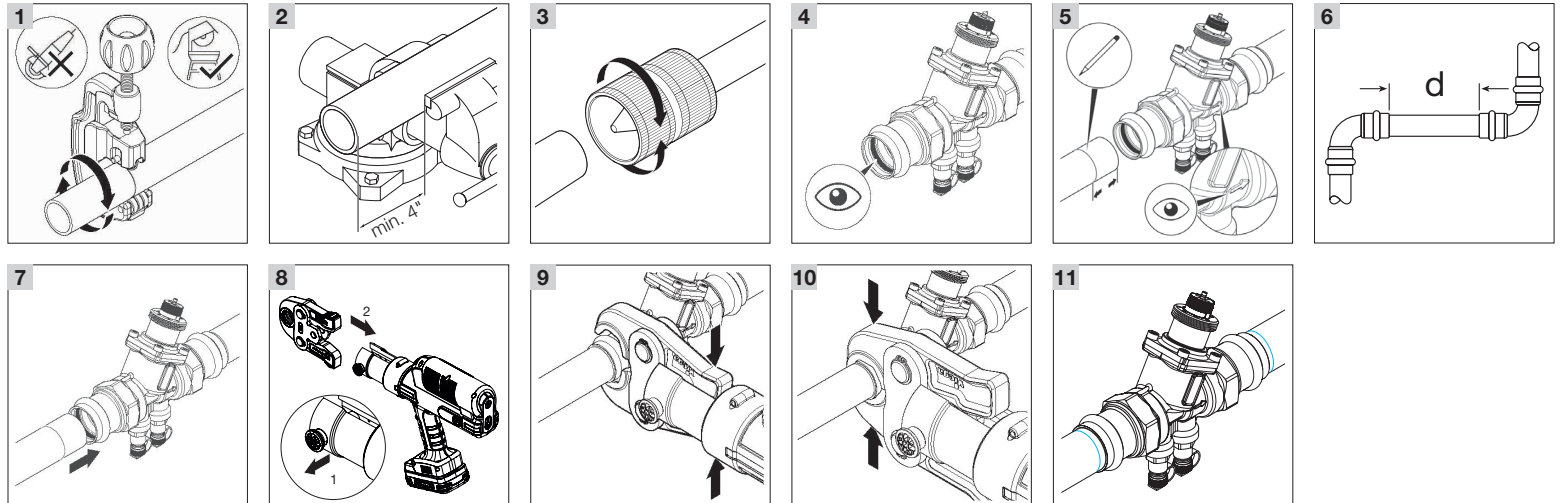


Model 2981.71 / 2987.72



**Viega LLC**  
 585 Interlocken Blvd.  
 Broomfield, CO 80021  
 Phone (800) 976-9819  
 www.viega.us

PI-PP 531240 0424 ProPress Balancing and Control Valve



EN

## Viega ProPress Balancing and Control Valve

For Hard Copper Tubing in ½" to 2" and Soft Copper Tubing in ½" to 1¼"

**!** Viega products are designed to be installed by licensed and trained plumbing and mechanical professionals who are familiar with Viega products and their installation. **Installation by non-professionals may void Viega LLC's warranty.**

**!** **DANGER!** Read and understand all instructions for installing Viega ProPress fittings. Failure to follow all instructions may result in extensive property damage, serious injury, or death.

**!** Only valves marked with NSF-61 and NSF 372 are allowed for use in potable water systems.

- 1 Cut copper tubing square using displacement-type cutter or fine-toothed saw.
- 2 Cut tubing a minimum of 4" away from the contact area of the vise to prevent possible damage to the tubing in the press area.
- 3 Remove burr from inside and outside of tubing and prep to proper insertion depth using a preparation tool or fine grit sandpaper.

- 4 Check the sealing element for correct fit. Do not use oils or lubricants.
- 5 Mark proper insertion depth as indicated by the Viega ProPress Insertion Depth Chart. Improper insertion depth may result in improper seal. It is recommended that the depth marking be visible on the completed assembly. Ensure the indication arrow on the valve body matches the correct flow direction of the system.

### Viega ProPress Insertion Depth Chart

| Tube Size       | ½" | ¾" | 1" | 1¼" | 1½" | 2"  |
|-----------------|----|----|----|-----|-----|-----|
| Insertion Depth | ¾" | ⅞" | ⅞" | 1"  | 1⅞" | 1⅞" |

**i** Copper tubing must be free of surface imperfections, including metal stamped print lines, before a ProPress valve is installed.

- 6 Refer to the chart below for minimum distance between fittings. To ensure a correct press, a minimum distance between press fittings must be maintained. Failure to provide this distance may result in an improper seal.

| Tube Diameter (in) | d (in) | d (mm) |
|--------------------|--------|--------|
| ½                  | 0      | 0      |
| ¾                  | 0      | 0      |
| 1                  | 0      | 0      |
| 1¼                 | ⅞      | 10     |
| 1½                 | ⅞      | 15     |
| 2                  | ¾      | 20     |

## EN Product Instructions Viega ProPress Balancing and Control Valve

This document is subject to updates. For the most current Viega technical literature please visit [www.viega.us](http://www.viega.us).

- 7 While turning slightly, slide valve onto tubing to the marked depth. End of tubing must contact stop.
- 8 Insert appropriate Viega ProPress jaw into the press tool and push in, holding pin until it locks in place.

**!** **WARNING!** Keep extremities and foreign objects away from press tool during pressing operation to prevent injury or incomplete press.

- 9 Open the jaw and place at right angle on the valve. Visually check insertion depth using mark on tubing.
- 10 Hold trigger on press tool until press jaws have fully engaged the valve.
- 11 After pressing, open the jaw and remove the press tool. Repeat steps for the other end of the valve.