

Product Instructions

Viega ProPress® Check Valve



Model 2974.2ZL



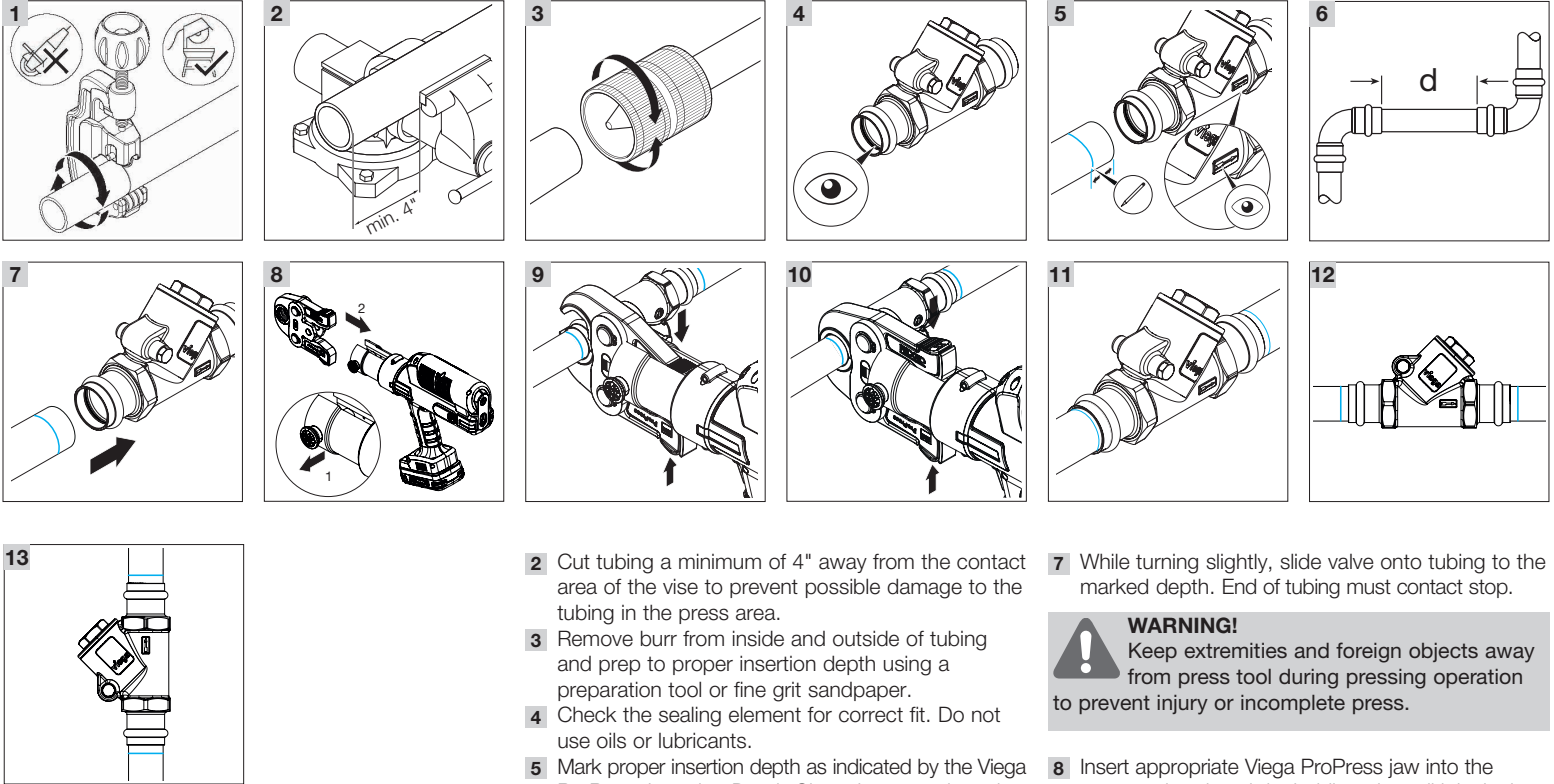
Viega LLC
585 Interlocken Blvd.
Broomfield, CO 80021

Phone (800) 976-9819
www.viega.us

EN Product Instructions Viega ProPress Check Valve

This document is subject to updates. For the most current Viega technical literature please visit www.viega.us.

PI-PP 531217 0424 ProPress Check Valve



EN

Viega ProPress Check Valve For Hard Copper Tubing in 1/2" to 2" and Soft Copper Tubing in 1/2" to 1 1/4"

! Viega products are designed to be installed by licensed and trained plumbing and mechanical professionals who are familiar with Viega products and their installation. **Installation by non-professionals may void Viega LLC's warranty.**

! **DANGER!**
Read and understand all instructions for installing Viega ProPress fittings. Failure to follow all instructions may result in extensive property damage, serious injury, or death.

! Only valves marked with NSF-61 and NSF 372 are allowed for use in potable water systems.

1 Cut copper tubing square using displacement-type cutter or fine-toothed saw.

- 2** Cut tubing a minimum of 4" away from the contact area of the vise to prevent possible damage to the tubing in the press area.
- 3** Remove burr from inside and outside of tubing and prep to proper insertion depth using a preparation tool or fine grit sandpaper.
- 4** Check the sealing element for correct fit. Do not use oils or lubricants.
- 5** Mark proper insertion depth as indicated by the Viega ProPress Insertion Depth Chart. Improper insertion depth may result in improper seal. It is recommended that the depth marking be visible on the completed assembly. Make sure the flow direction indicator on the valve is facing the correct direction.

Viega ProPress Insertion Depth Chart

Tube Size	1/2"	3/4"	1"	1 1/4"	1 1/2"	2"
Insertion Depth	3/4"	7/8"	7/8"	1"	1 7/16"	1 9/16"

i Copper tubing must be free of surface imperfections, including metal stamped print lines, before a ProPress valve is installed.

- 6** Refer to the chart below for minimum distance between fittings. To ensure a correct press, a minimum distance between press fittings must be maintained. Failure to provide this distance may result in an improper seal.

Tube Diameter (in)	d (in)	d (mm)
1/2	0	0
3/4	0	0
1	0	0
1 1/4	7/16	10
1 1/2	5/8	15
2	3/4	20

- 7** While turning slightly, slide valve onto tubing to the marked depth. End of tubing must contact stop.

! **WARNING!**
Keep extremities and foreign objects away from press tool during pressing operation to prevent injury or incomplete press.

- 8** Insert appropriate Viega ProPress jaw into the press tool and push in, holding pin until it locks in place.
- 9** Open the jaw and place at right angle on the valve. Visually check insertion depth using mark on tubing.
- 10** Hold trigger on press tool until press jaws have fully engaged the valve.
- 11** After pressing, open the jaw and remove the press tool. Repeat steps for the other end of the valve.
- 12** For horizontal installation, the tower must be at the top of the valve.
- 13** For vertical installation, the flow direction must be flowing upwards from bottom to top.

! **WARNING!**
This valve has two screw-in pieces. Once the valve is pressed, **DO NOT** attempt to adjust the screw pieces to the body.

! **WARNING!**
The cap should not be opened.